



User guide for JMicon 6XX ISP Install Tool

Version 1.0

CONFIDENTIAL



© Copyright JMicon Technology 2011.

All Rights Reserved.

Printed in Taiwan 2011

JMicon and the JMicon Logo are trademarks of JMicon Technology Corporation in Taiwan and/or other countries. Other company, product and service names may be trademarks or service marks of others.

All information contained in this document is subject to change without notice. The products described in this document are NOT intended for use implantation or other life supports application where malfunction may result in injury or death to persons. The information contained in this document does not affect or change JMicon's product specification or warranties. Nothing in this document shall operate as an express or implied license or environments, and is presented as an illustration. The results obtained in other operating environments may vary.

THE INFORMATION CONTAINED IN THIS DOCUMENT IS PROVIDED ON AN "AS IS" BASIS. In no event will JMicon be liable for damages arising directly or indirectly from any use of the information contained in this document.

JMicon Technology Corporation
1F, No.13, Innovation Road 1,
Science Based Industrial Park
Hsinchu, Taiwan, R.O.C

For more information on JMicon products, please visit the JMicon web site at
<http://www.JMicon.com> or send email to sales@jmicon.com



Table of Contents

1. Feature	4
2. QuickStart:.....	5
3. BIOS setup:	8
4. Upgrade firmware:	11
5. History:	13

CONFIDENTIAL



1. Feature

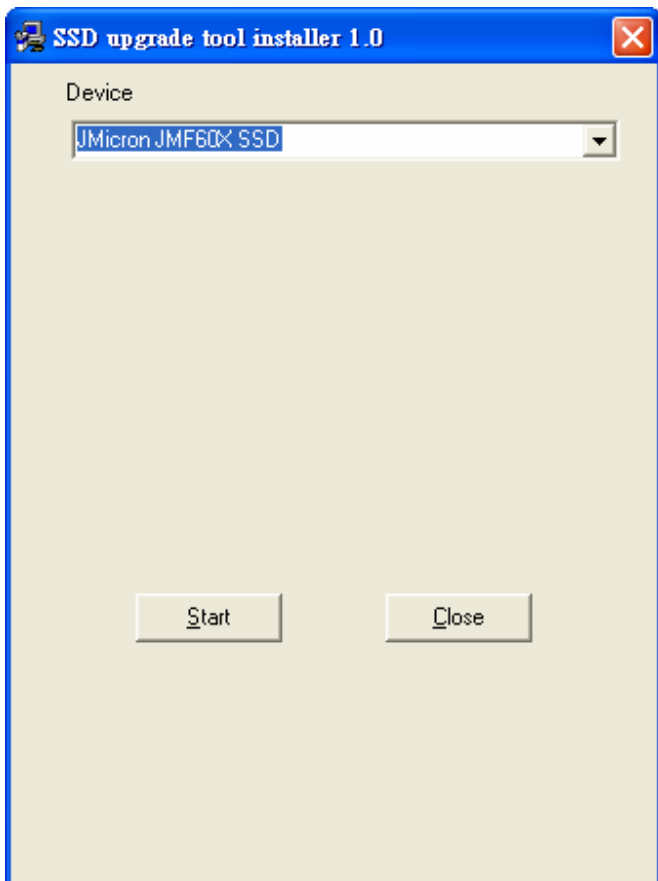
- Auto makes an USB device bootable.
- Auto copy ISP tool into the bootable device.

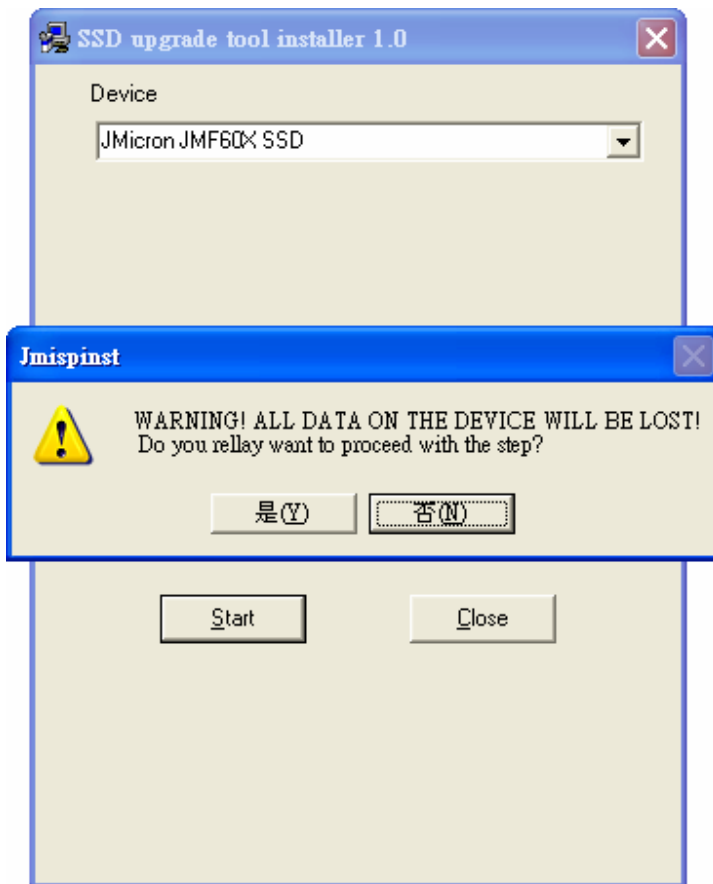
CONFIDENTIAL

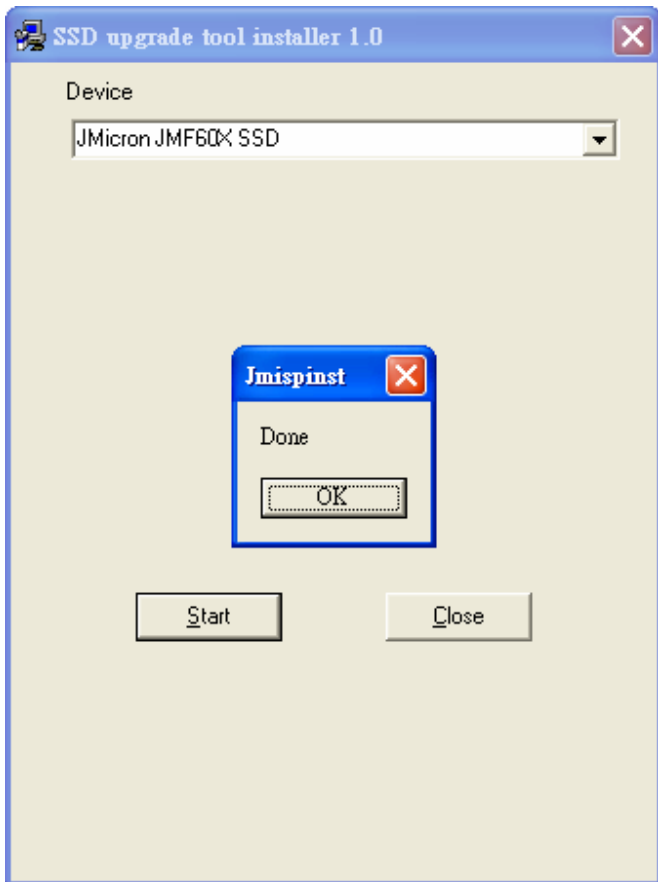


2. Quick Start:

- Insert an USB device.
- Execute the tool (JMISPIst) and press the “Start” button.



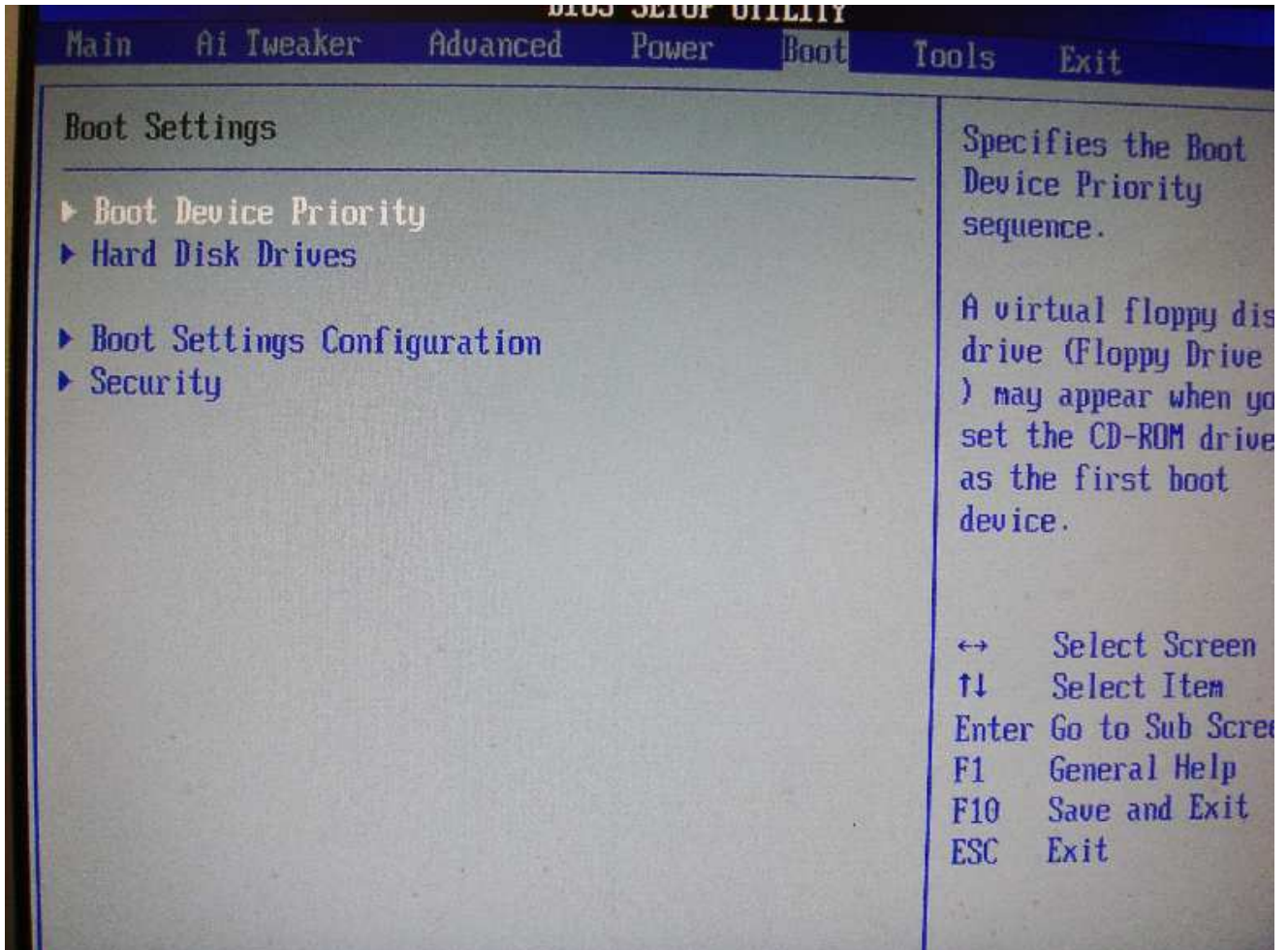


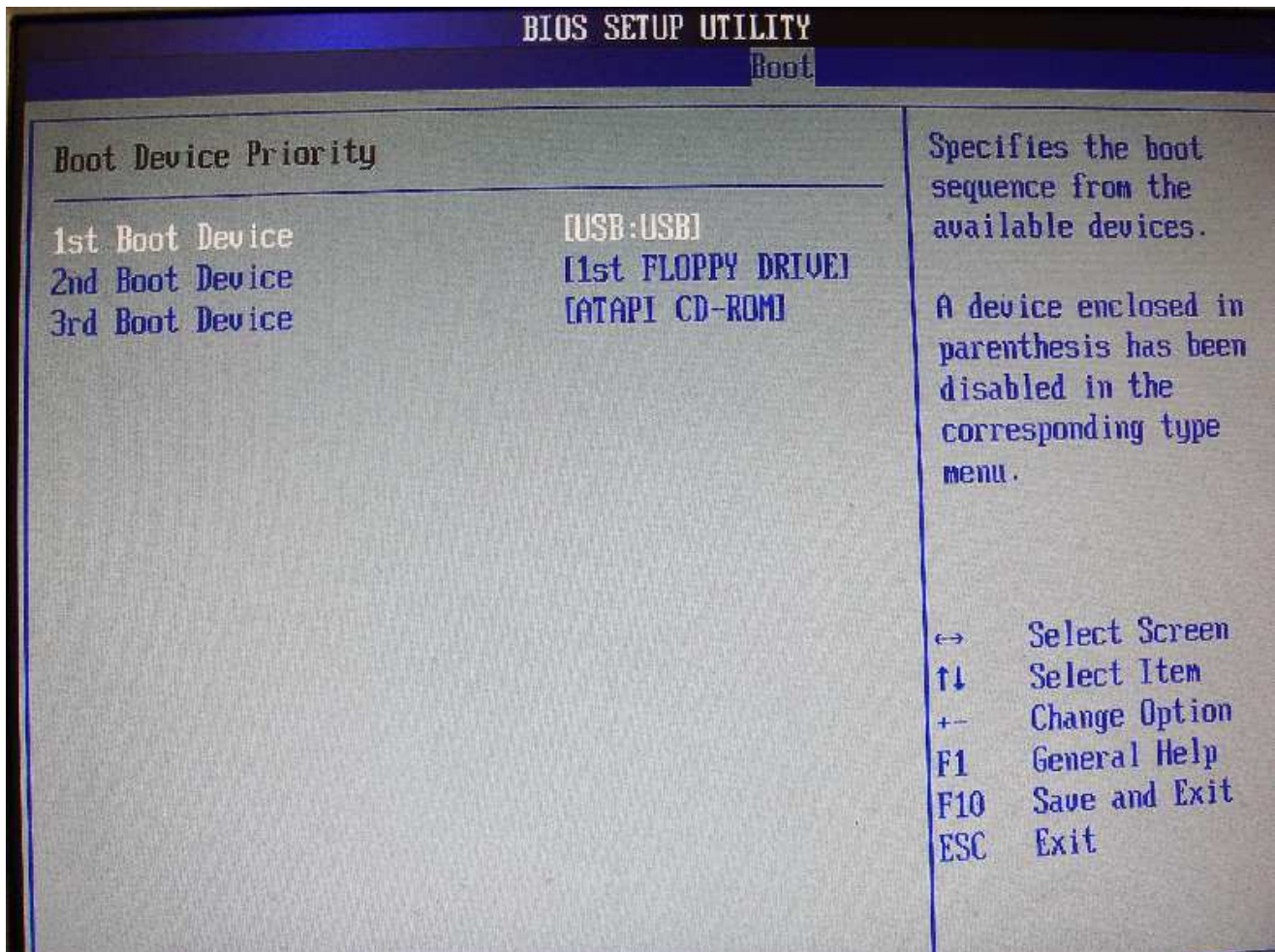




3. BIOS setup:

- Change Boot Device Priority

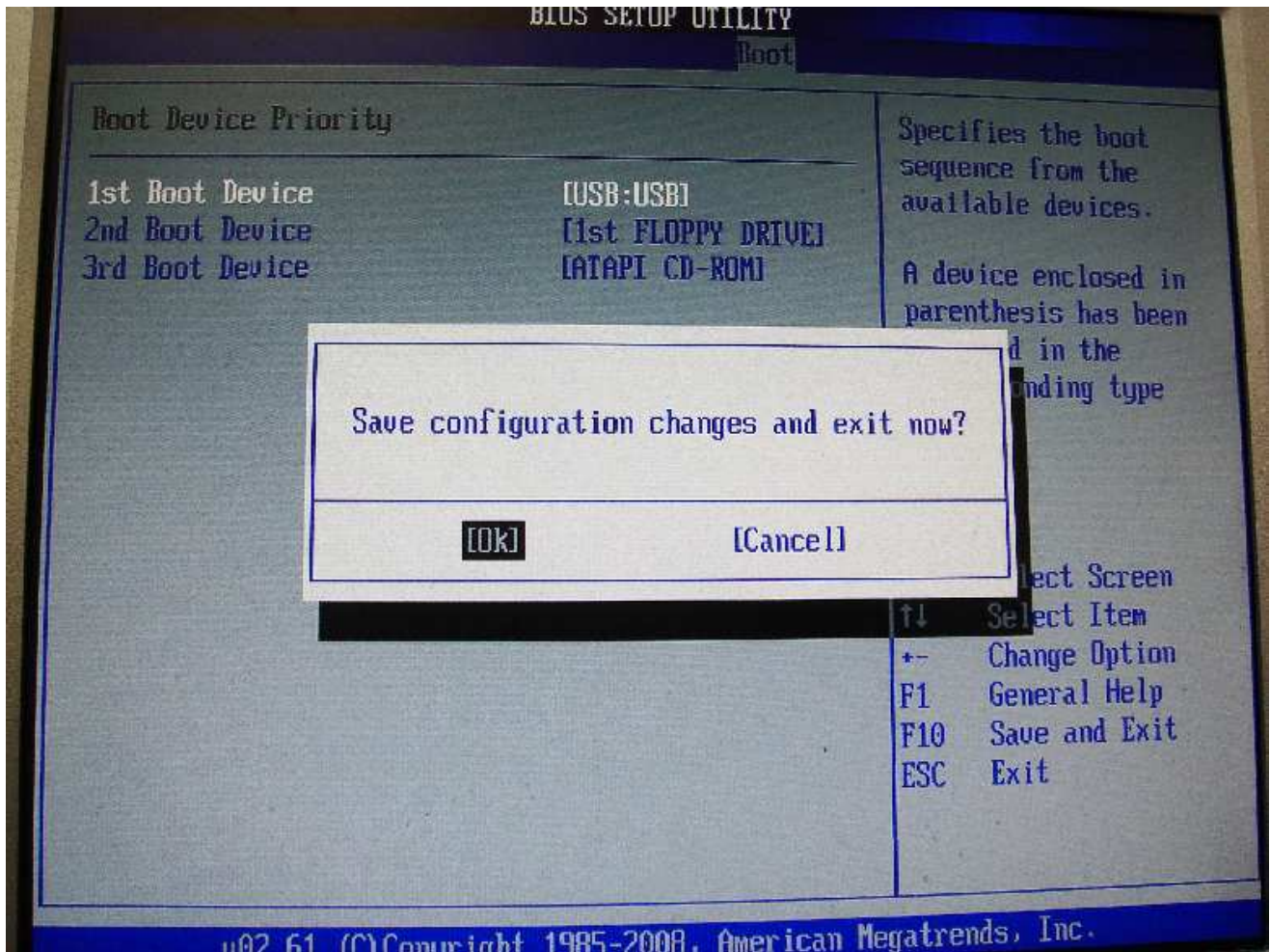




- Configure SATA as "IDE mode"
-
- Save and exist



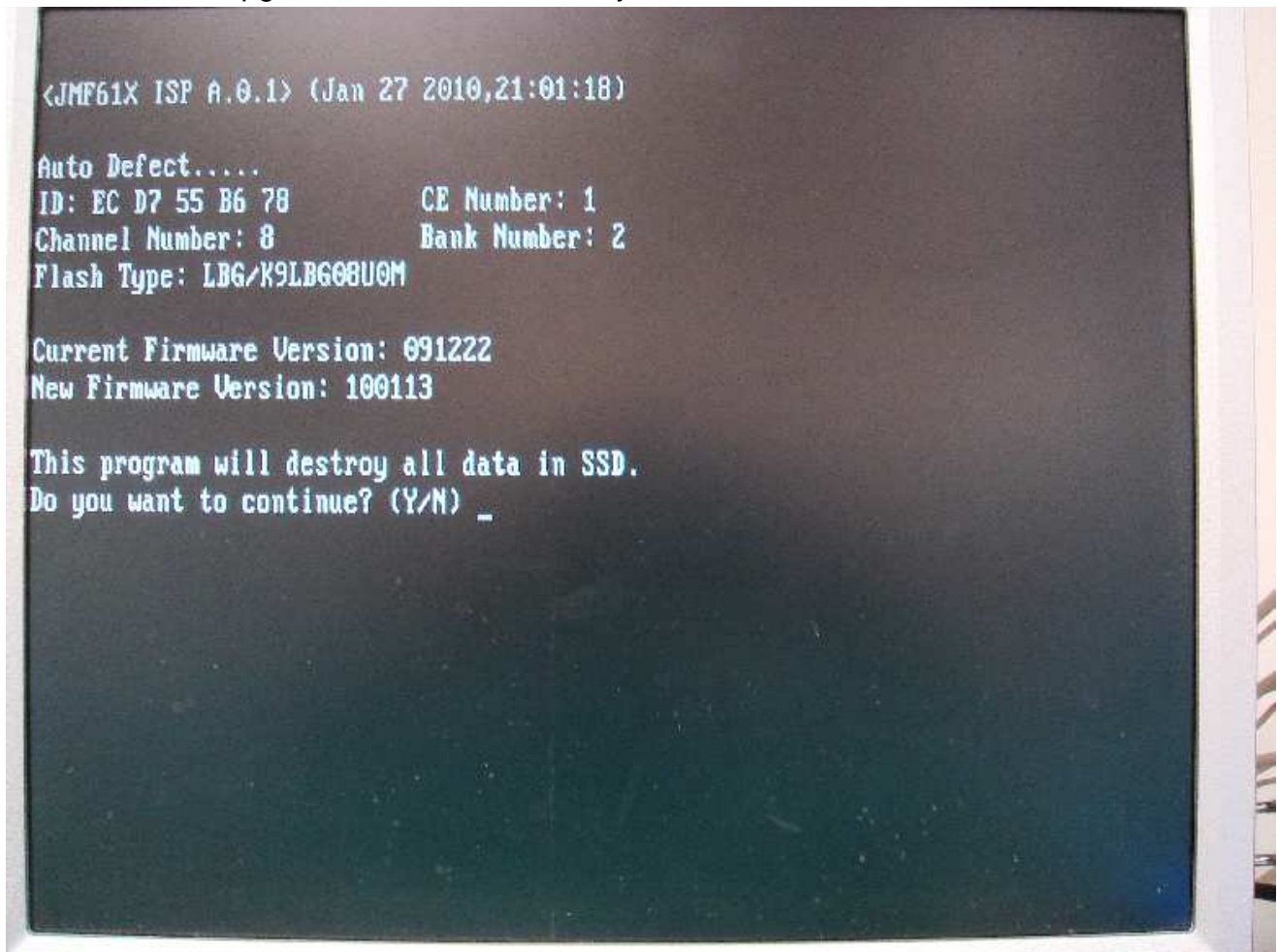
User guide for JMicron 6XX ISP install tool

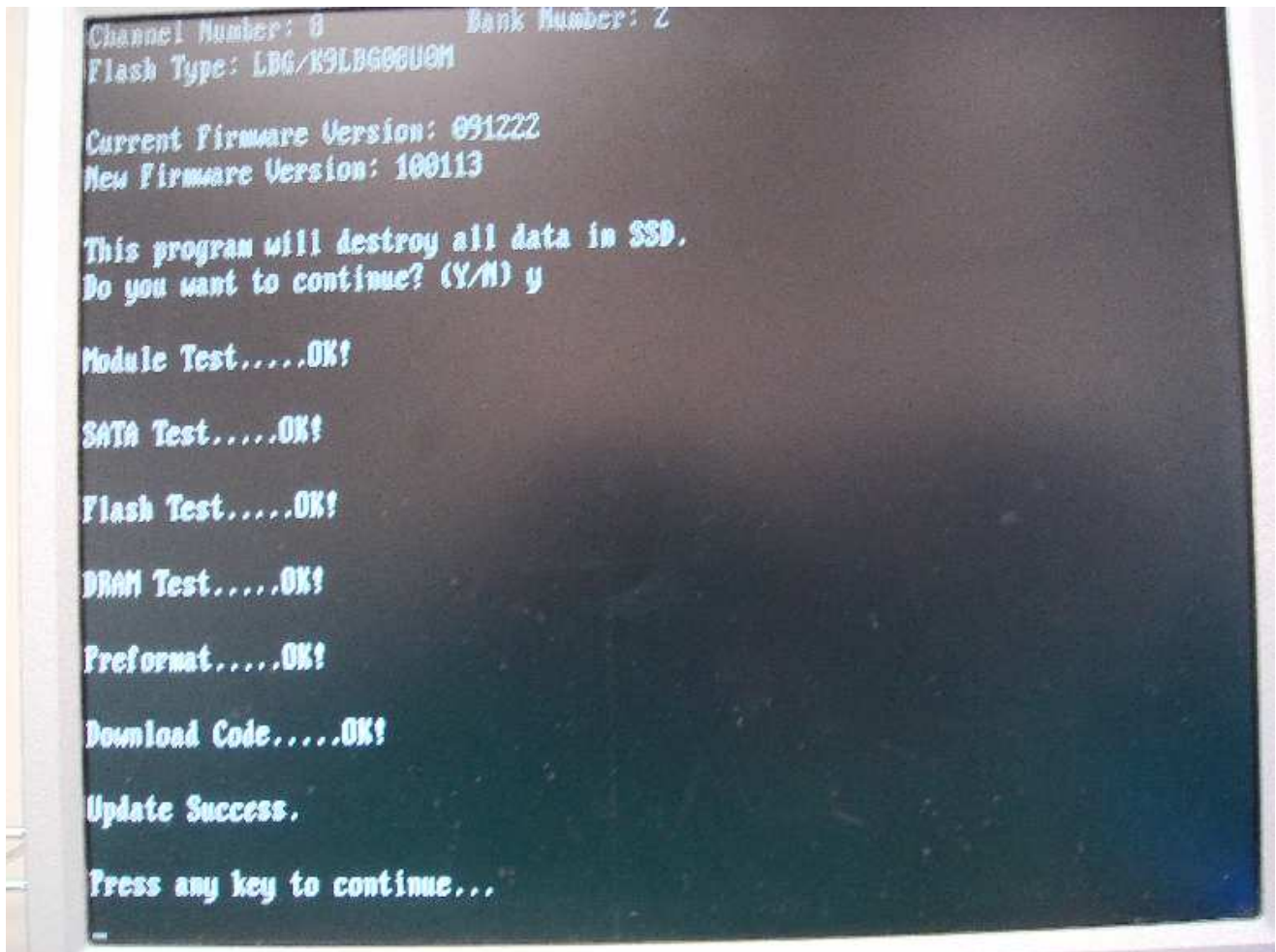




4. Upgrade firmware:

- Please "Y" to upgrade firmware automatically.
- Reboot after upgrade firmware successfully.







5. History:

Version	Date	Remark
1.0	11/02/24	Initial version

CONFIDENTIAL